






### 11 Harden Crescent GEORGES HALL NSW

6  3  2 

Designed with an emphasis on natural light and space, this home offers remarkable value with its spacious design suitable for a growing family.

Unfolding two beautifully appointed levels, this abode is a complete package located in a quiet street and a high set position. A spacious floorplan with dining and kitchen overlooking the sunny north facing backyard. Featuring:

Upstairs:

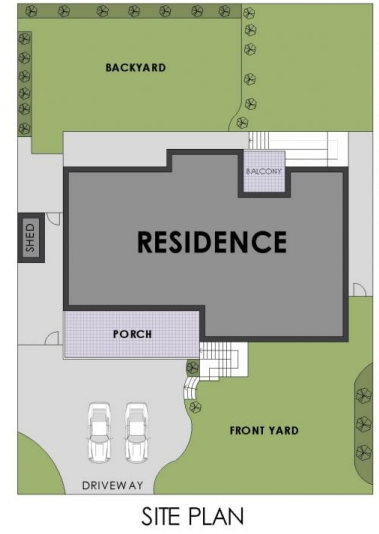
- :: 3 lavish bedrooms with built-in wardrobes
- :: Stylish, well-appointed bathroom
- :: Modern kitchen with am of storage
- :: Spacious dining overlooking to the lush garden
- :: Wrap around living area perfect to separate entertaining

**Type** : House  
**Land Size** : 556 sqm  
**View** : <https://www.instaproperty.com.au/8391607>



**Kien Hoang**  
0434575425

[For full version visit the website](https://www.instaproperty.com.au)



# 11 Harden Crescent, Georges Hall



**WARNING: DISCLAIMER** This information is not to be relied upon. It is strictly used for marketing and illustration purposes only. All measurements are approximate. Not to scale. No liability accepted. You must rely on your own inquiries and seek advice from your solicitor. Floor plan by cnkplan@cnkplan.com.au/ www.cnkplan.com.au