



### 29 Gemoore Street SMITHFIELD NSW

3 1 2

Situated in a peaceful location this home offers a good condition interiors, a block of land with potential for future development, and a convenient location of Smithfield. Featurings:

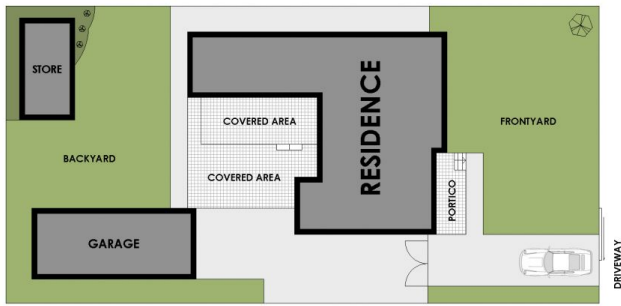
- :: Oversized bedrooms with plenty of natural light.
- :: 2 Living areas with polished timber floors.
- :: Renovated kitchen & large under cover area
- :: Huge open backyard for the kids to run around.
- :: Lock up garage with laundry to the rear.
- :: Total land size 556sqm with 16.7M Frontage
- :: Potential for granny flat(STCA)

**Type** : House  
**Land Size** : 556 sqm  
**View** : <https://www.instaproperty.com.au/8391621>

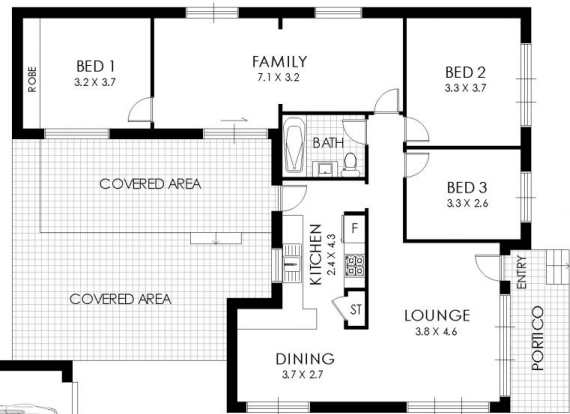
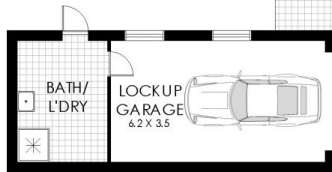


**Kien Hoang**  
0434575425

[For full version visit the website](https://www.instaproperty.com.au)



SITE PLAN



FLOOR PLAN

## 29 Gemoore Street, Smithfield

**WARNING: DISCLAIMER** This information is not to be relied upon. It is strictly used for marketing and illustration purposes only. All measurements are approximate. Not to scale. No liability accepted. You must rely on your own inquiries and seek advice from your solicitor. Floor plan by [cnkplan@cnkplan.com.au](mailto:cnkplan@cnkplan.com.au) / [www.cnkplan.com.au](http://www.cnkplan.com.au)

