



G23/351 Hume Highway BANKSTOWN NSW

1 1 1

Located in one of the well-managed complexes - Phoenix Palm Bankstown, this boutique apartment is architecturally designed to seamlessly combine the indoor and outdoor aspects of the modern lifestyle.

Type : Apartment
Land Size : 92 sqm
View : <https://www.instaproperty.com.au/8391677>

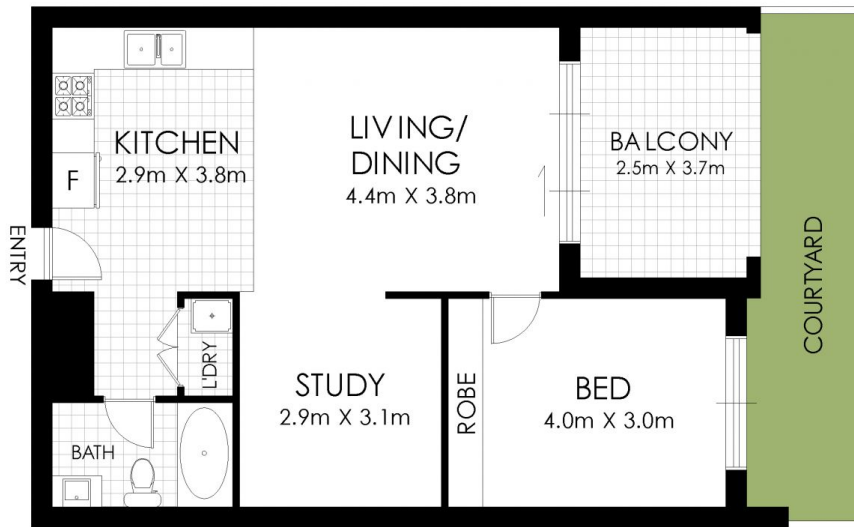
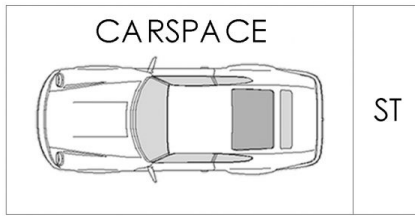
Featuring:

- :: Good sized bedroom with built-in wardrobe
- :: An additional room for home office or study
- :: Lavish bathroom with quality finishes
- :: Modern gas cooking kitchen and stone benchtop
- :: Combined living and dining areas
- :: Generous streamlined open-plan layout
- :: Well-appointed laundry



Kien Hoang
0434575425

[For full version visit the website](https://www.instaproperty.com.au)



FLOOR PLAN

G23E/351 Hume Highway, Yagoona



WARNING: DISCLAIMER This information is not to be relied upon. It is strictly used for marketing and illustration purposes only. All measurements are approximate. Not to scale. No liability accepted. You must rely on your own inquiries and seek advice from your solicitor. Floor plan by cnkplan@cnkplan.com.au/ www.cnkplan.com.au