



105A Sproule Street LAKEMBA NSW

5 2 3

Great location close to all amenities, this modern beautiful family home is bathed in sunshine and with a unique brick accent wall. The property offers an excellent features floor plan with an abundance of natural light. Within a short stroll to shops, restaurants and public transport.

Type : Semi Detached

View : <https://www.instaproperty.com.au/8391689>

Featuring:

- :: 5 bedrooms, main bedroom with en-suite.
- :: Gas cooking kitchens with stone benchtop and plentiful built-in storage
- :: Open plan living and dining area
- :: Outdoor dining covered alfresco area with separate kitchen facing courtyard



Kien Hoang
0434575425

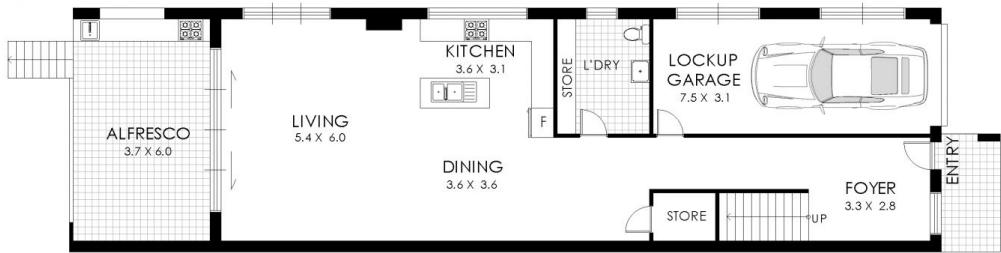
[For full version visit the website](https://www.instaproperty.com.au)



SITE PLAN



FIRST FLOOR



GROUND FLOOR

105A Sproule Street, Lakemba

WARNING: DISCLAIMER This information is not to be relied upon. It is strictly used for marketing and illustration purposes only. All measurements are approximate. Not to scale. No liability accepted. You must rely on your own inquiries and seek advice from your solicitor. Floor plan by cnkplan@cnkplan.com.au/ www.cnkplan.com.au

