

1341 Canterbury Road PUNCHBOWL NSW

4 1 2

Occupying a prime position, this impressively presented family home offers a bright and spacious, living and dining area. It embraces a desirable north-to-rear aspect and enjoys an extensive alfresco terrace. The property is located within an easy walk of Punchbowl Public School, Shops & Public Transport.

Type : House

View : <https://www.instaproperty.com.au/8391797>

Featuring:

- :: Four well-scaled bedrooms, three with built-ins
- :: Spacious kitchen with plenty of cupboard space
- :: Well-appointed bathroom with an extra toilet
- :: Spacious open living and dining leading out to the alfresco

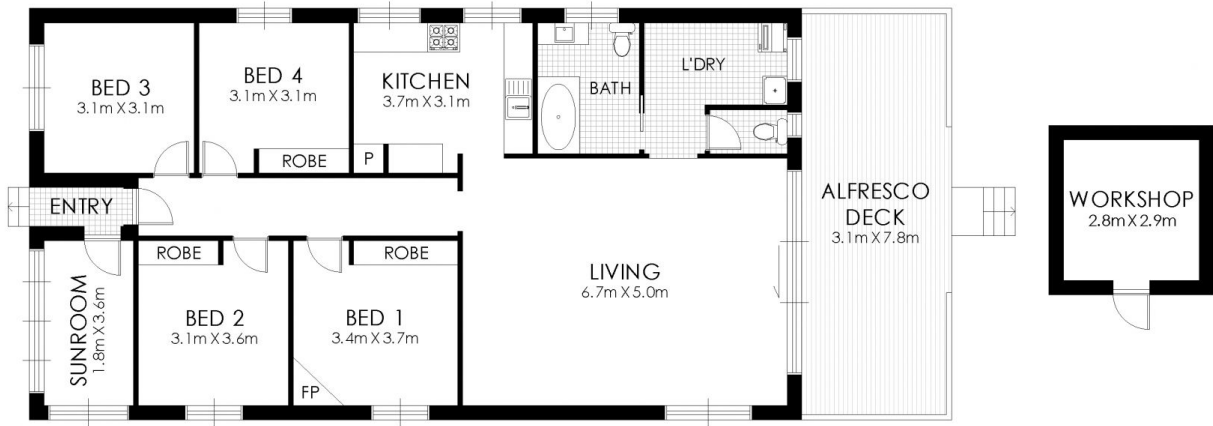


Kien Hoang
0434575425

[For full version visit the website](https://www.instaproperty.com.au)



SITE PLAN



FLOOR PLAN

1341 Canterbury Road, Punchbowl



WARNING: DISCLAIMER This information is not to be relied upon. It is strictly used for marketing and illustration purposes only. All measurements are approximate. Not to scale. No liability accepted. You must rely on your own inquiries and seek advice from your solicitor. Floor plan by cnkplan@cnkplan.com.au/ www.cnkplan.com.au