



1/221 Memorial Avenue LIVERPOOL NSW

3  2  2 

Designed to provide a harmonious lifestyle suited to a growing family, this stylishly appointed townhouse effortlessly fuses fluid in/outdoor living with high-quality fittings across a practical layout. Its bright interiors provide three bedrooms, a gourmet kitchen and a private outdoor space. The property is well located within a beautifully maintained complex, just a short walk from local shops, schools, transport and park.

Featuring:

- :: Three generous bedrooms all with built-ins
- :: The master offers a walk-in robe and an ensuite
- :: Modish kitchen with stainless steel gas appliances

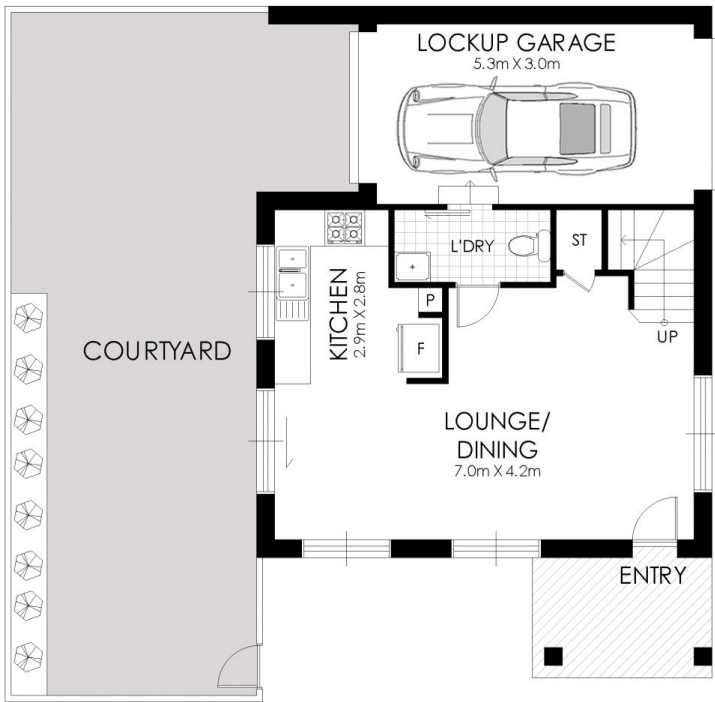
Type : Townhouse

View : <https://www.instaproperty.com.au/8391805>

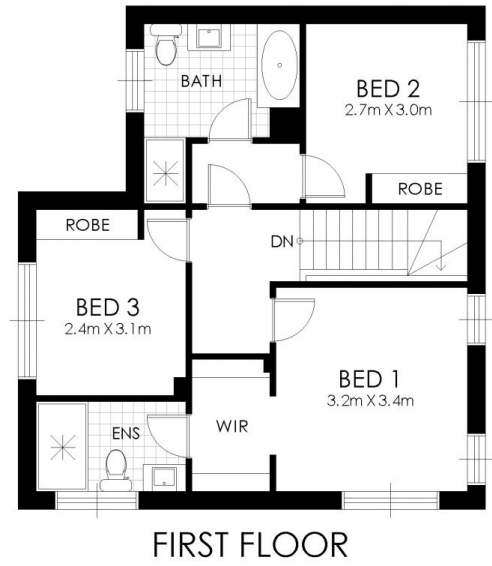


Kien Hoang
0434575425

[For full version visit the website](https://www.instaproperty.com.au)



GROUND FLOOR



FIRST FLOOR

1/221 Memorial Avenue, Liverpool

WARNING: DISCLAIMER This information is not to be relied upon. It is strictly used for marketing and illustration purposes only. All measurements are approximate. Not to scale. No liability accepted. You must rely on your own inquiries and seek advice from your solicitor. Floor plan by cnkplan@cnkplan.com.au/ www.cnkplan.com.au

