



168 Griffiths Avenue BANKSTOWN NSW

3 3 3

Unfolding across a 695.6sqm with a frontage of 15.24m, an ideal for a duplex site (STCA), this updated family home provides an advantageous opportunity for families, investors, or developers looking to further capitalize and make their mark. This north-facing house with additional self contained retreat ensures a highly-versatile configuration and stylish interiors that lead to a manicured backyard with pergola. The property is located along a quiet tree-lined street just 850m from Bankstown Centre and Bankstown Station, a short stroll to diverse dining, quality schools and parklands.

Type : House

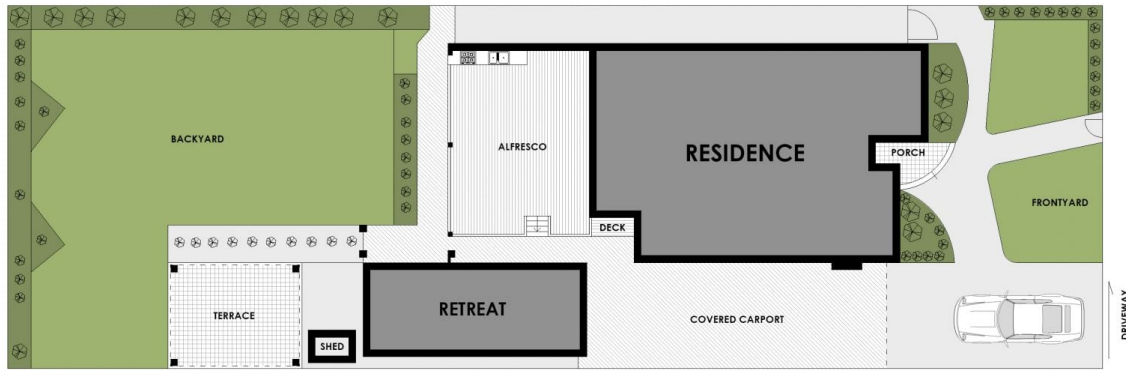
View : <https://www.instaproperty.com.au/8391832>



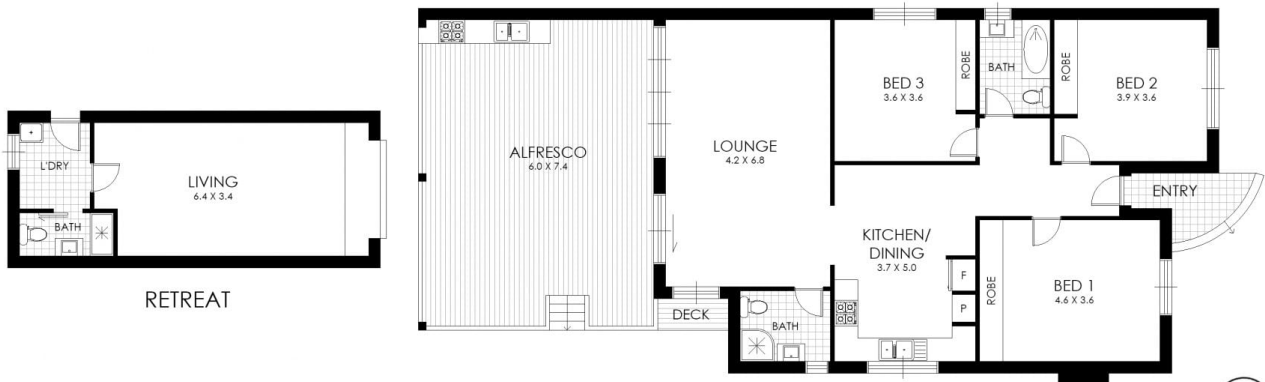
Kien Hoang
0434575425

Featuring:

[For full version visit the website](https://www.instaproperty.com.au)



SITE PLAN



FLOOR PLAN



168 Griffiths Avenue, Bankstown

WARNING: DISCLAIMER This information is not to be relied upon. It is strictly used for marketing and illustration purposes only. All measurements are approximate. Not to scale. No liability accepted. You must rely on your own inquiries and seek advice from your solicitor. Floor plan by cnkplan@cnkplan.com.au / www.cnkplan.com.au