



### 35 Myrtle Street PROSPECT NSW

4 🛏 4 🚿 4 🚗

This solid built house, planned and decorated by an architect, provides a timeless living space for large families. It boasts spacious interiors, including elegant lounge and dining areas that have been recently updated with a bright and beautiful design. The property sits on a 557.5 sqm block and is conveniently located near Woolworths Prospect, schools, public transportation, and parks. With exclusive outdoor entertaining spaces, this house is an ideal sanctuary for those seeking a grand and comfortable lifestyle.

**Type** : House  
**Land Size** : 557.5 sqm  
**View** : <https://www.instaproperty.com.au/8391977>

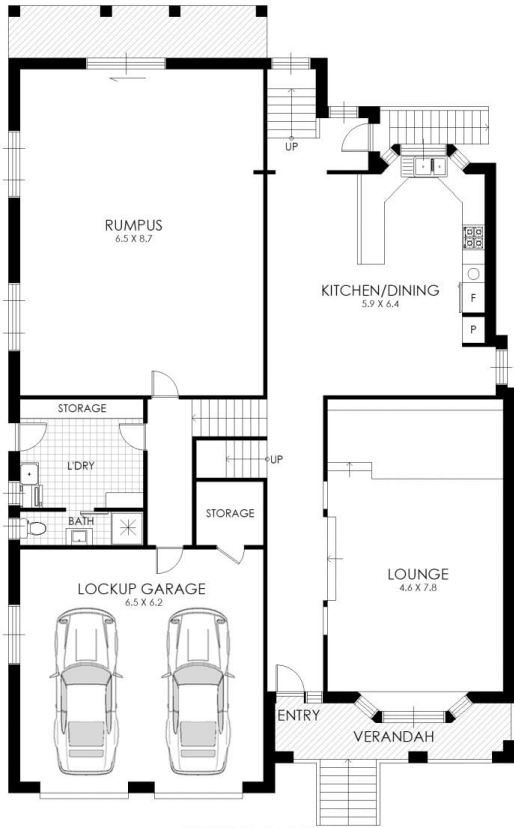


**Kien Hoang**  
0434575425

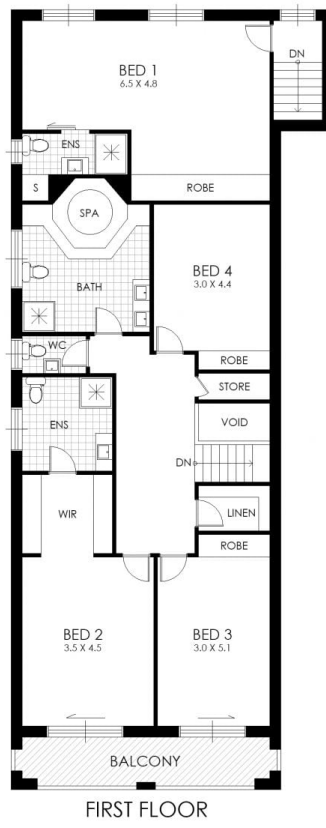
Featuring:

:: Solid home sets on 557.5 sqm

[For full version visit the website](https://www.instaproperty.com.au)



GROUND FLOOR



FIRST FLOOR



SITE PLAN



## 35 Myrtle Street, Prospect

**WARNING: DISCLAIMER** This information is not to be relied upon. It is strictly used for marketing and illustration purposes only. All measurements are approximate. Not to scale. No liability accepted. You must rely on your own inquiries and seek advice from your solicitor. Floor plan by [cnkplan@cnkplan.com.au](mailto:cnkplan@cnkplan.com.au) / [www.cnkplan.com.au](http://www.cnkplan.com.au)