



38 Galton Street WETHERILL PARK NSW

3 2 2

Offering an opportunity to create an enriching and motivating family lifestyle on a generous 645 sqm parcel, the house, and the retreat duo have each been maintained and presented to offer a lifestyle of ease and comfort. Located on a quiet, peaceful, leafy street, within a short drive to shops, and public schools. This ideal two self-contained spaces home has unlimited potential as a perfect family house, investment, or development.

Type : House
Land Size : 645 sqm
View : <https://www.instaproperty.com.au/8391985>

Featuring:

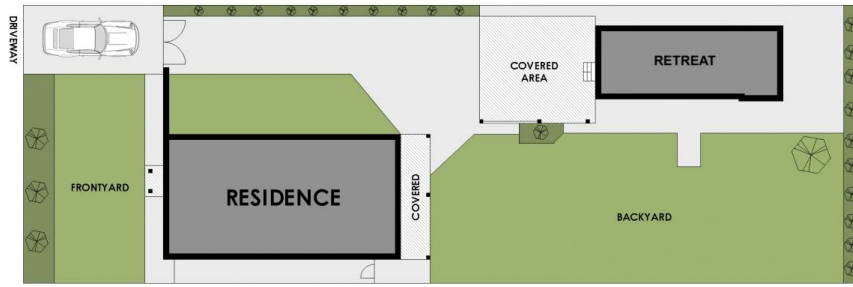
Front House:

:: Two generous well-appointed bedrooms

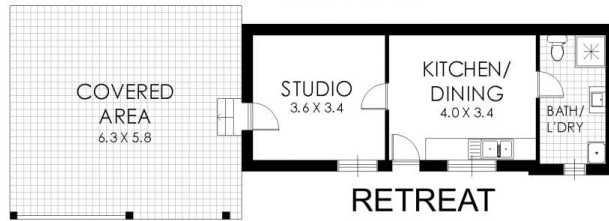


Kien Hoang
0434575425

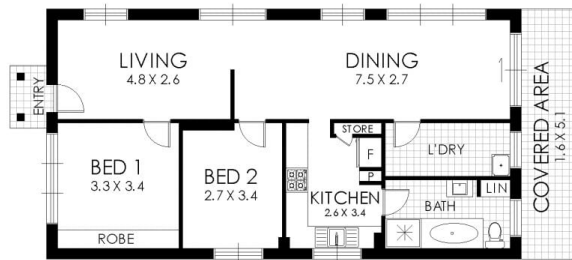
[For full version visit the website](https://www.instaproperty.com.au)



SITE PLAN



RETREAT



FLOOR PLAN

38 Galton Street, Wetherill Park

WARNING: DISCLAIMER This information is not to be relied upon. It is strictly used for marketing and illustration purposes only. All measurements are approximate. Not to scale. No liability accepted. You must rely on your own inquiries and seek advice from your solicitor. Floor plan by cnkplan@cnkplan.com.au / www.cnkplan.com.au

