



23 Moora Street CHESTER HILL NSW

3 1 3

Situated on a spacious 670.3sqm block with a 17.07m frontage, this home offers exciting redevelopment possibilities (STCA). The property features three bedrooms and a child-friendly backyard, making it an ideal canvas for creating a comfortable family residence. Located just minutes away from Chester Hills bustling center, public transportation, schools, and essential amenities.

Type : House
Land Size : 670.3 sqm
View : <https://www.instaproperty.com.au/8392000>

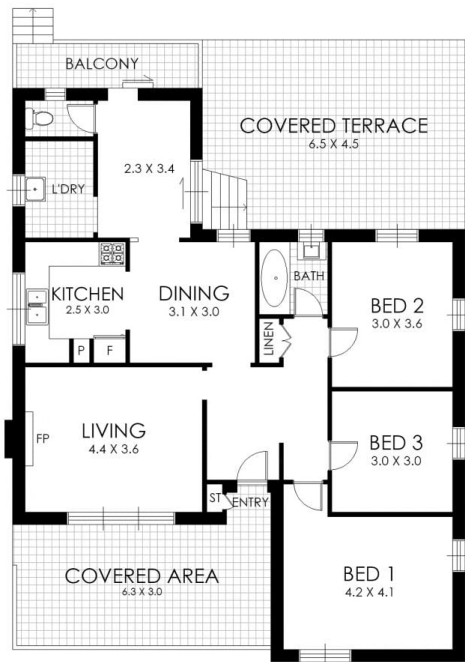
Featuring:

- :: Sizeable block with potential for growth and redevelopment (STCA)
- :: Three well-proportioned bedrooms
- :: Functional kitchen equipped with an electric cooktop, and

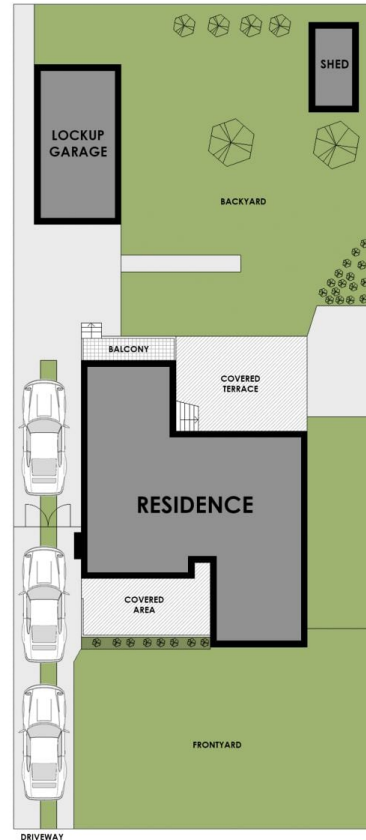
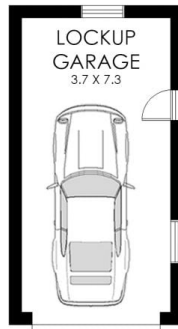


Kien Hoang
0434575425

[For full version visit the website](https://www.instaproperty.com.au)



FLOOR PLAN



SITE PLAN



23 Moora Street, Chester Hill

WARNING: DISCLAIMER This information is not to be relied upon. It is strictly used for marketing and illustration purposes only. All measurements are approximate. Not to scale. No liability accepted. You must rely on your own inquiries and seek advice from your solicitor. Floor plan by cnkplan@cnkplan.com.au/ www.cnkplan.com.au