



**17 Glenshee Place ST ANDREWS NSW**

3 1 2

Presenting endless opportunities in a pin drop quiet cul-de-sac location and desirable lifestyle pocket, this parcel of land boasts of 560 sqm. The readymade property ensures a fantastic first home or investment, enjoys a central setting moments from everyday amenities, transport, shopping. It is located next to the parkland with a playground.

**Type** : House  
**Land Size** : 560.5 sqm  
**View** : <https://www.instaproperty.com.au/8392012>

Featuring:

- :: Three generous bedrooms two fitted with wardrobe
- :: Spacious open plan lounge with a fireplace, dining area/ sunroom
- :: Bright and airy kitchen features original appliances and

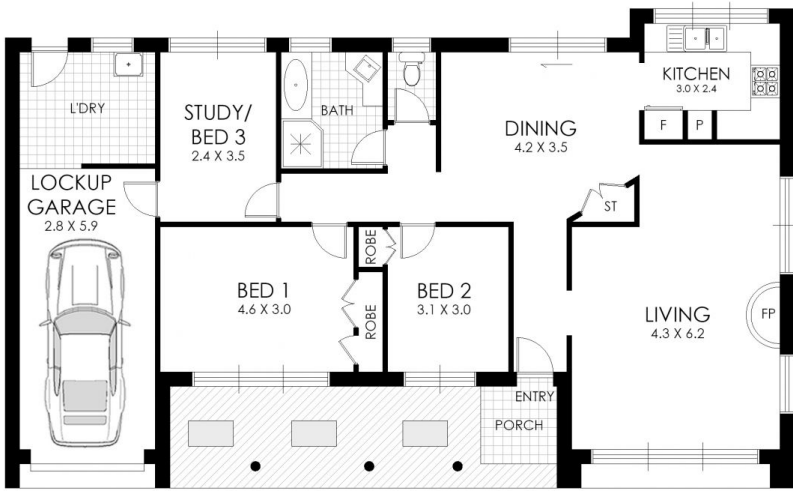


**Iris Ngo**  
02 7202 2299

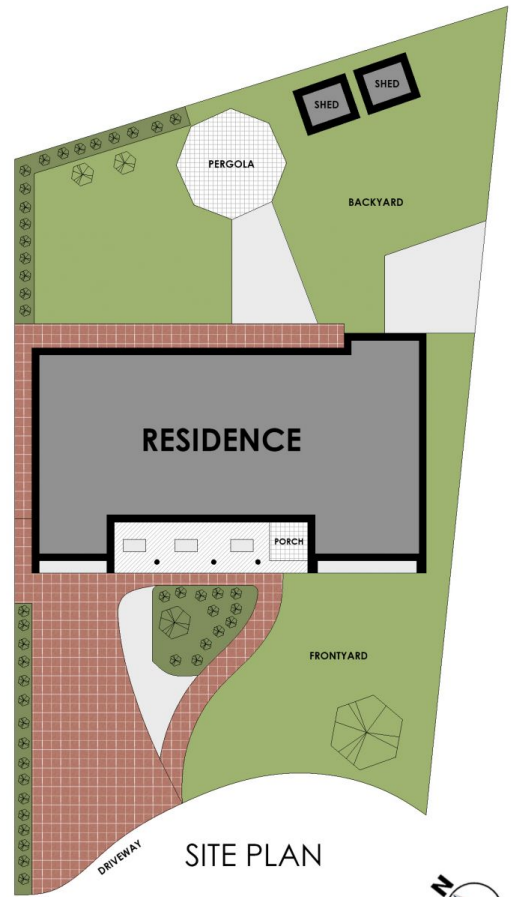


**Kien Hoang**  
0434575425

[For full version visit the website](https://www.instaproperty.com.au)



FLOOR PLAN



SITE PLAN

## 17 Glenshee Place, St Andrews

**WARNING: DISCLAIMER** This information is not to be relied upon. It is strictly used for marketing and illustration purposes only. All measurements are approximate. Not to scale. No liability accepted. You must rely on your own inquiries and seek advice from your solicitor. Floor plan by [cnkplan@cnkplan.com.au](mailto:cnkplan@cnkplan.com.au)/ [www.cnkplan.com.au](http://www.cnkplan.com.au)

