



**17 Chelmsford Avenue BANKSTOWN NSW**

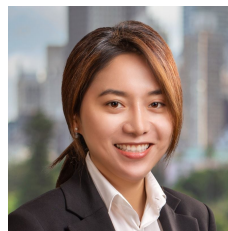
4 3 2

Discover cozy, sunlit living in the heart of Bankstown. This charming residence features a leafy garden and inviting design, offering a three-bedroom main house and a one-bedroom retreat for ultimate comfort and versatility.

**Type** : House  
**Land Size** : 505.9 sqm  
**View** : <https://www.instaproperty.com.au/8392182>

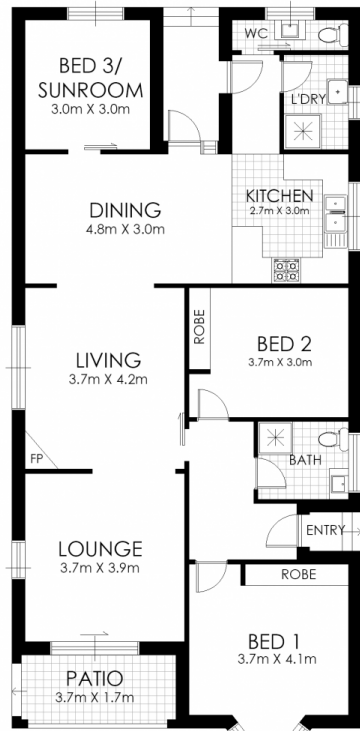
**Features:**

- :: R4 Zoning
- :: Walking distance to Bankstown City Plaza, Pho Minh Temple, St Brendan Church, Bankstown Girls High School, Childcare and Bankstown Memorial Park
- :: Easy access to public transport, just 800 meters from Bankstown station
- :: Low maintenance backyard includes a shed for additional



**Iris Ngo**  
02 7202 2299

[For full version visit the website](https://www.instaproperty.com.au)



FLOOR PLAN



RETREAT



SITE PLAN

## 17 Chelmsford Avenue, Bankstown

**WARNING: DISCLAIMER** This information is not to be relied upon. It is strictly used for marketing and illustration purposes only. All measurements are approximate. Not to scale. No liability accepted. You must rely on your own inquiries and seek advice from your solicitor. Floor plan by [cnkplan@cnkplan.com.au](mailto:cnkplan@cnkplan.com.au)/ [www.cnkplan.com.au](http://www.cnkplan.com.au)

