

**2/68 Gowrie Avenue PUNCHBOWL NSW**

3 3 2

Discover the perfect blend of style and convenience in this charming 2-story family townhouse. With spacious living areas, modern amenities, and a prime location near Punchbowl's key attractions, this home offers an ideal setting for your comfortable and modern living.

**Type** : Townhouse

**View** : <https://www.instaproperty.com.au/8392184>

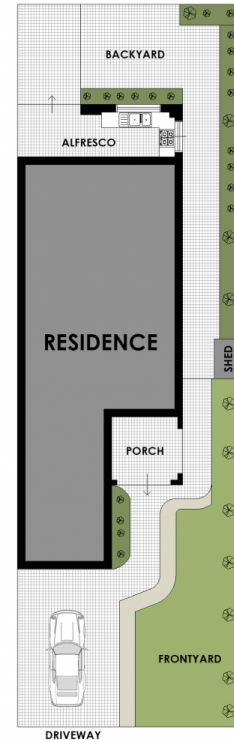
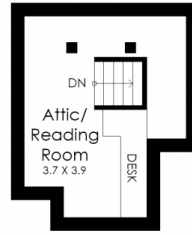
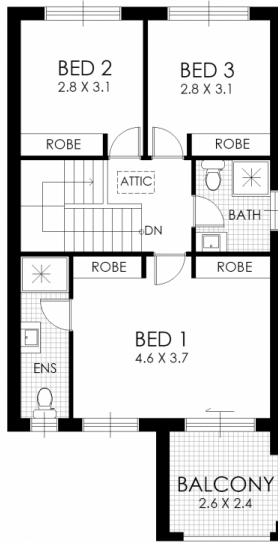
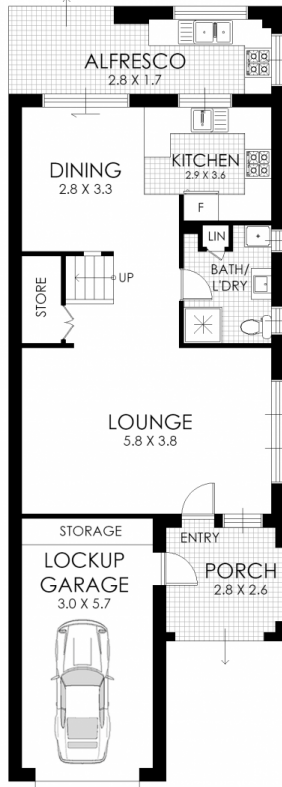
**Features:**

- :: Three generously sized bedrooms all come with built-in wardrobes
- :: Luxury master bedroom includes a private ensuite and a balcony
- :: Modern kitchen equipped with an electric cooktop and stainless steel appliances



**Kien Hoang**  
**0434575425**

[For full version visit the website](https://www.instaproperty.com.au)



## 2/68 Gowrie Avenue, Punchbowl

**WARNING: DISCLAIMER** This information is not to be relied upon. It is strictly used for marketing and illustration purposes only. All measurements are approximate. Not to scale. No liability accepted. You must rely on your own inquiries and seek advice from your solicitor. Floor plan by [cnkplan@cnkplan.com.au](mailto:cnkplan@cnkplan.com.au) / [www.cnkplan.com.au](http://www.cnkplan.com.au)

