



### 73-75 Bligh Street FAIRFIELD EAST NSW

6 2 5

Unlock the potential of this prime combined property at 73 and 75 Bligh Street, Fairfield East. With a substantial total land area of approximately 1,656 sqm, these adjoining properties offer a remarkable opportunity for developers and investors, zoned R4 for high-density development (STCA).

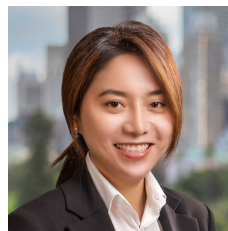
**Type** : House  
**Land Size** : 1656 sqm  
**View** : <https://www.instaproperty.com.au/8392194>

Features:

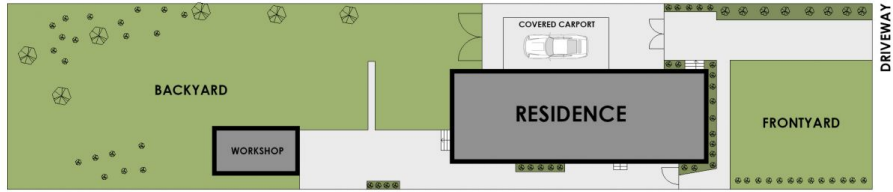
Development Potential:

- :: Total combined land area of 1,656 sqm
- :: Floor space ratio 2:1; Permissible height up to 20m

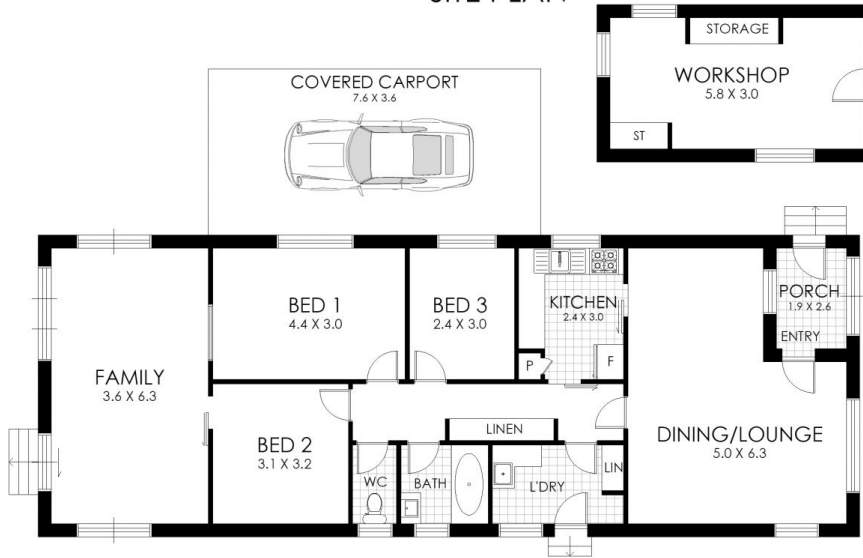
[For full version visit the website](#)



**Iris Ngo**  
02 7202 2299



SITE PLAN

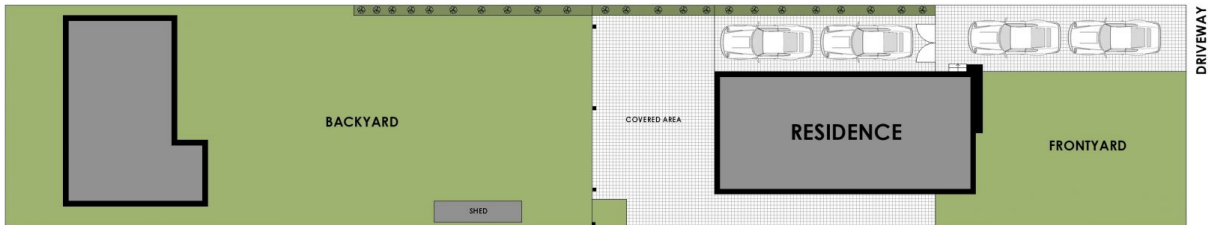


FLOOR PLAN

73 Bligh Street, Fairfield East



WARNING: DISCLAIMER This information is not to be relied upon. It is strictly used for marketing and illustration purposes only. All measurements are approximate. Not to scale. No liability accepted. You must rely on your own inquiries and seek advice from your solicitor. Floor plan by cnkplan@cnkplan.com.au/ www.cnkplan.com.au



SITE PLAN



FLOOR PLAN

75 Bligh Street, Fairfield East



WARNING: DISCLAIMER This information is not to be relied upon. It is strictly used for marketing and illustration purposes only. All measurements are approximate. Not to scale. No liability accepted. You must rely on your own inquiries and seek advice from your solicitor. Floor plan by cnkplan@cnkplan.com.au/ www.cnkplan.com.au