



20/76 Copeland Street LIVERPOOL NSW

2 1 1

This beautiful unit is ready for you to move in and start enjoying the vibrant lifestyle Liverpool has to offer. Conveniently located just a short stroll from the bustling Liverpool Shopping Centre, this home perfectly blends modern comfort with unbeatable accessibility.

Features:

:: Two generous bedrooms includes a wardrobe in one bedroom

:: Well-equipped kitchen with an electric stovetop and ample storage space

:: Stylish bathroom features a relaxing bathtub and a separate shower

:: Spacious living area boasts timber flooring, air

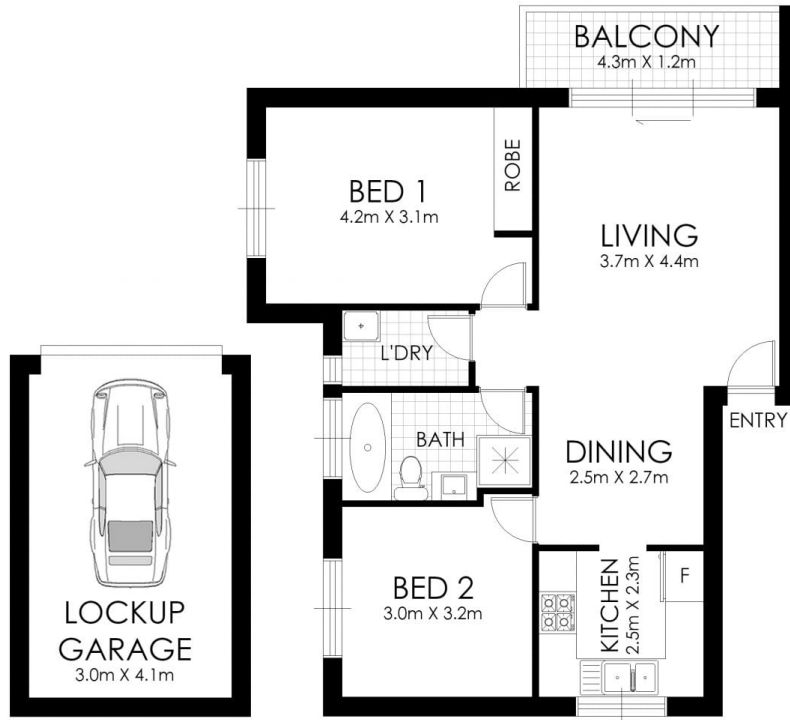
Type : Unit

View : <https://www.instaproperty.com.au/8392205>



Kien Hoang
0434575425

[For full version visit the website](https://www.instaproperty.com.au)



FLOOR PLAN

20/76 Copeland Street, Liverpool

WARNING: DISCLAIMER This information is not to be relied upon. It is strictly used for marketing and illustration purposes only. All measurements are approximate. Not to scale. No liability accepted. You must rely on your own inquiries and seek advice from your solicitor. Floor plan by cnkplan@cnkplan.com.au/ www.cnkplan.com.au

