



18 Gallop Street WARWICK FARM NSW

6 3 2

Tucked away in a prime location, this modern residence with an attached granny flat is the epitome of convenience, comfort, and versatility. Meticulously designed with both style and functionality in mind, this property is an ideal choice for families, investors, or those seeking a dual living arrangement. Located in a vibrant and well-connected neighborhood, you'll enjoy the best of suburban living with easy access to urban amenities.

Features:

:: Prime Location:

- Education Institutions:

Just 290m from Warwick Farm Public School, providing

Type : House

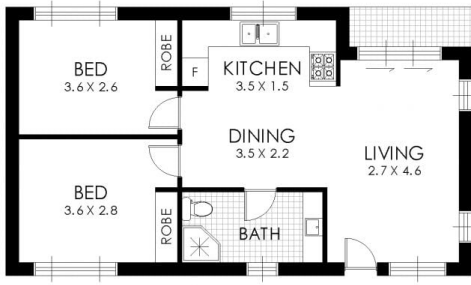
Land Size : 562.8 sqm

View : <https://www.instaproperty.com.au/8392209>



Kien Hoang
0434575425

[For full version visit the website](https://www.instaproperty.com.au)



GRANNY FLAT



FLOOR PLAN



SITE PLAN

18 Gallop Street, Warwick Farm

WARNING: DISCLAIMER This information is not to be relied upon. It is strictly used for marketing and illustration purposes only. All measurements are approximate. Not to scale. No liability accepted. You must rely on your own inquiries and seek advice from your solicitor. Floor plan by cnkplan@cnkplan.com.au / www.cnkplan.com.au

