



### 7 Kendee Street SADLEIR NSW

4 2 3

Nestled on a spacious 575.4 Sqm block with a 15.24 m frontage, this property offers versatility and potential. Whether you're seeking a smart investment, a knockdown-and-rebuild project, or a comfortable family home, this opportunity ticks all the boxes. Conveniently located just moments from Ashcroft Public School and Liverpool Central, you'll enjoy easy access to shops, cafes, restaurants, and essential amenities.

Features:

- :: Four Well-Sized Bedrooms all with windows providing natural light, and two featuring built-in robes.
- :: Two Well-Maintained Bathrooms - one with a shower

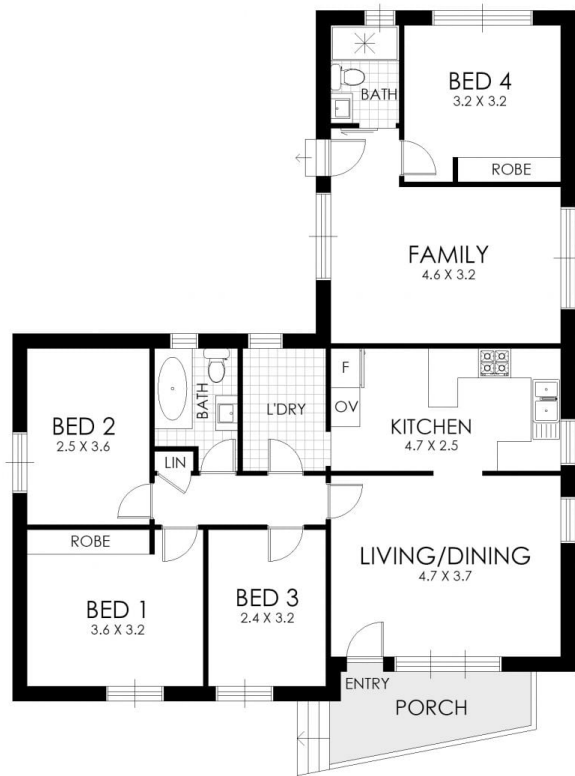
[For full version visit the website](https://www.instaproperty.com.au/8392221)

**Type** : House

**View** : <https://www.instaproperty.com.au/8392221>



**Kien Hoang**  
0434575425



FLOOR PLAN



SITE PLAN

7 Kendee Street, Sadleir

WARNING: DISCLAIMER This information is not to be relied upon. It is strictly used for marketing and illustration purposes only. All measurements are approximate. Not to scale. No liability accepted. You must rely on your own inquiries and seek advice from your solicitor. Floor plan by cnkplan@cnkplan.com.au/ www.cnkplan.com.au

