



**1/19 Mitchell Street CONDELL PARK NSW**

4 🛏 3 🚗 2 🚗

Nestled on a tranquil street, this townhouse blends modern living with ultimate convenience. Positioned just moments from Condell Park Public School and Condell Park Market, it provides easy access to local shops, cafes, restaurants, and essential amenities ideal for families and professionals alike.

**Type** : Townhouse  
**Land Size** : 264 sqm  
**View** : <https://www.instaproperty.com.au/8392362>

**Features:**

- :: Four Well-Sized Bedrooms with abundant natural light fills each room, with three featuring built-in robes. The master suite boasts an ensuite, built-in robe, and a private balcony with serene street views.
- :: Sleek Bathrooms offers a relaxing bathtub, a shower screen, and floor-to-ceiling tiles for a luxurious feel.

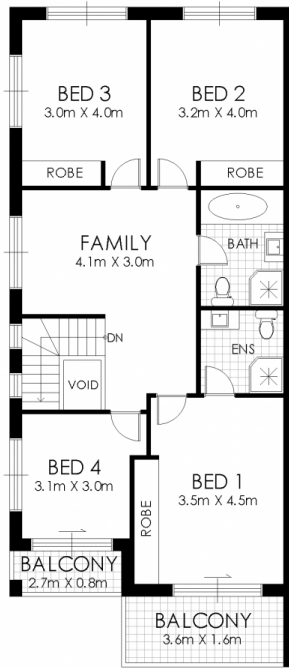


**Kien Hoang**  
**0434575425**

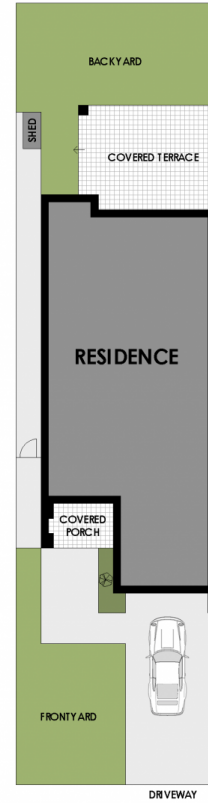
[For full version visit the website](https://www.instaproperty.com.au)



GROUND LEVEL



UPPER LEVEL



SITE PLAN

## 1/19 Mitchell Street, Condell Park

**WARNING: DISCLAIMER** This information is not to be relied upon. It is strictly used for marketing and illustration purposes only. All measurements are approximate. Not to scale. No liability accepted. You must rely on your own inquiries and seek advice from your solicitor. Floor plan by [cnkplan@cnkplan.com.au](mailto:cnkplan@cnkplan.com.au) / [www.cnkplan.com.au](http://www.cnkplan.com.au)

