



15 Williamson Crescent WARWICK FARM NSW

5 🛏 2 🚗 2 🚗

Nestled on a spacious 620m² block with a 16.1m frontage, this property presents an exciting opportunity whether you're looking for a smart investment, a knockdown-rebuild project, or a comfortable family home, this versatile offering ticks all the boxes. Located in a highly convenient position, it is just moments from Mainsbridge School, Warwick Farm Station, and local parks, providing easy access to schools, public transport, and recreational facilities.

Main House:

:: Three spacious bedrooms, each designed to capture natural light and air conditioning for year-round comfort, with two featuring built-in wardrobes.

:: Modern bathroom boasting floor-to-ceiling tiles and a

Type : House

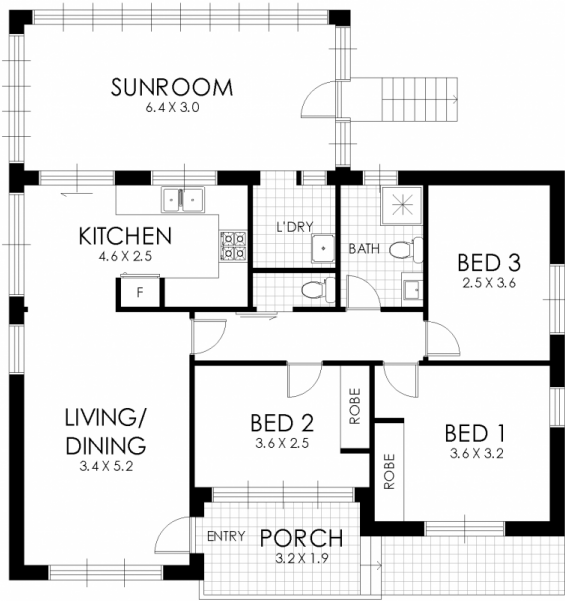
Land Size : 620 sqm

View : <https://www.instaproperty.com.au/8392369>

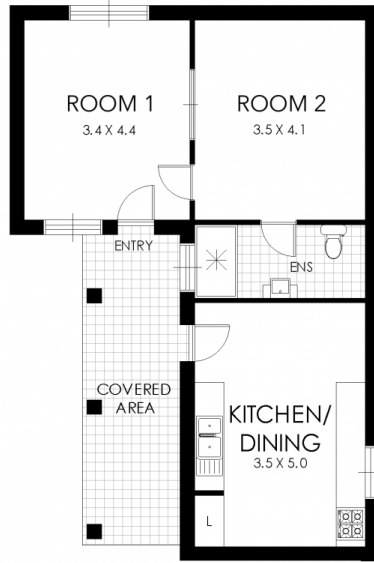


Kien Hoang
0434575425

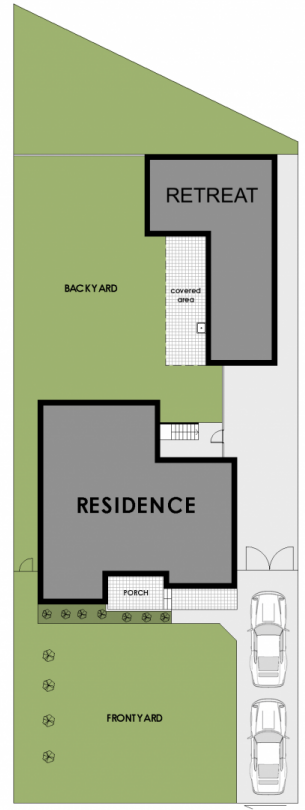
[For full version visit the website](https://www.instaproperty.com.au)



GROUND PLAN



RETREAT



SITE PLAN

15 Williamson Crescent, Warwick Farm

WARNING: DISCLAIMER This information is not to be relied upon. It is strictly used for marketing and illustration purposes only. All measurements are approximate. Not to scale. No liability accepted. You must rely on your own inquiries and seek advice from your solicitor. Floor plan by cnkplan@cnkplan.com.au/ www.cnkplan.com.au

