



30 McGirr Parade Warwick Farm NSW

4 2 3

Set on a substantial 708.2sqm parcel with a wide 15.24m frontage, this classic family home presents an outstanding opportunity for families, renovators, or astute investors. Offering a four-bedroom residence plus a separate flexi space with its own amenities, the property combines comfort, versatility, and future potential in a rapidly growing pocket of South West Sydney.

Whether you choose to enjoy it as is, renovate, or knock down and rebuild your dream home, the possibilities here are endless.

Property Highlights:

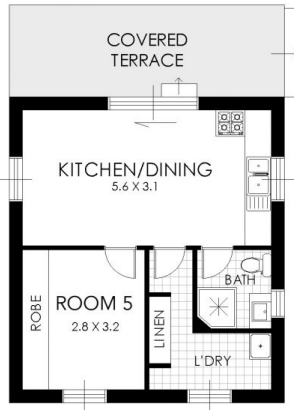
:: Expansive 708.2sqm block with 15.24m frontage

[For full version visit the website](https://www.insta-property.com.au)

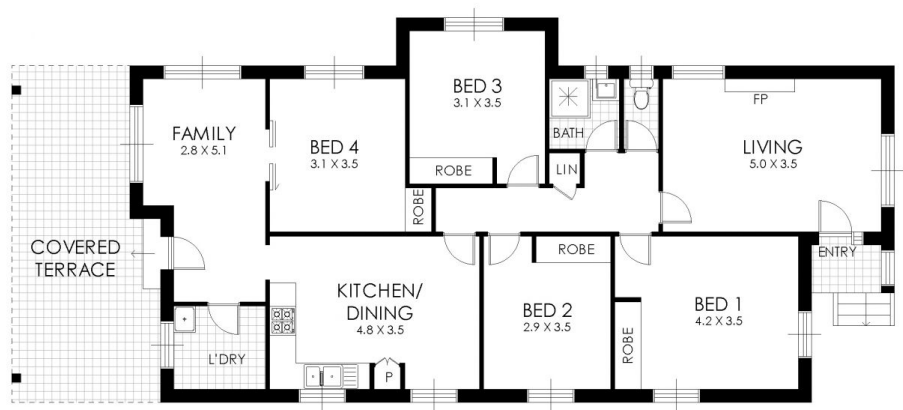
Type : House
Price : \$ 1,325,000
Land Size : 708.2 sqm
View : <https://www.insta-property.com.au/8513725>



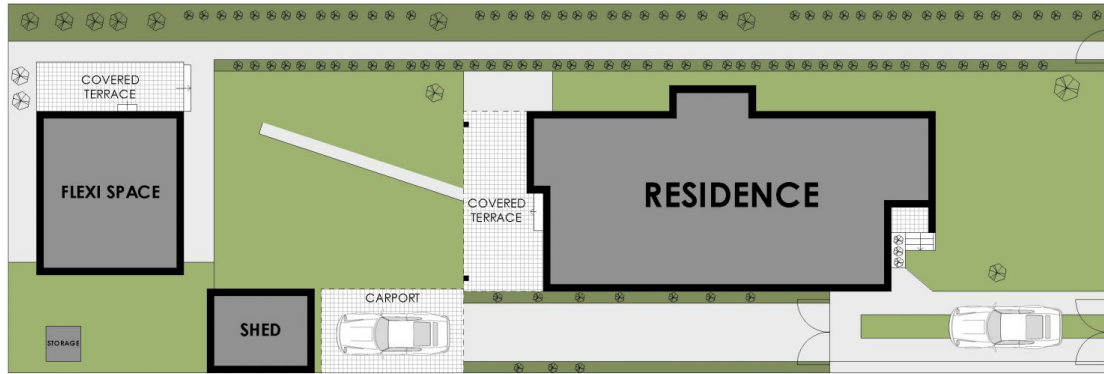
Kien Hoang
0434575425



FLEXI SPACE



FLOOR PLAN



SITE PLAN

30 McGirr Parade, Warwick Farm

WARNING: DISCLAIMER This information is not to be relied upon. It is strictly used for marketing and illustration purposes only. All measurements are approximate. Not to scale. No liability accepted. You must rely on your own inquiries and seek advice from your solicitor. Floor plan by cnkplan@cnkplan.com.au/ www.cnkplan.com.au

